



# 450Mbps

High Power Wireless N Router

**TL-WR941HP**

## Highlights

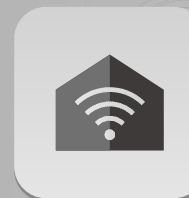
- **Superior Range** – High power amplifiers and high-gain antennas provide enhanced wireless range up to 10,000 sq ft\*1.
- **Wall-Penetrating Wi-Fi** – Enhanced Wi-Fi signal cuts through walls and obstacles, eliminating dead zones
- **3 Modes Functionality** – Offers three wireless modes, including Router, Range Extender, and Access Point
- **450Mbps wireless speed** – Ideal for video streaming, online gaming and VoIP



High Power



Antenna Gain



Maximum Range



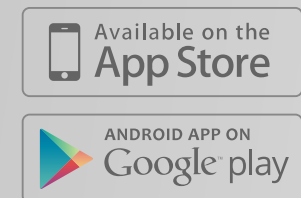
Multi-Purpose (Router/RE/AP)



450Mbps



Tether APP



# Features



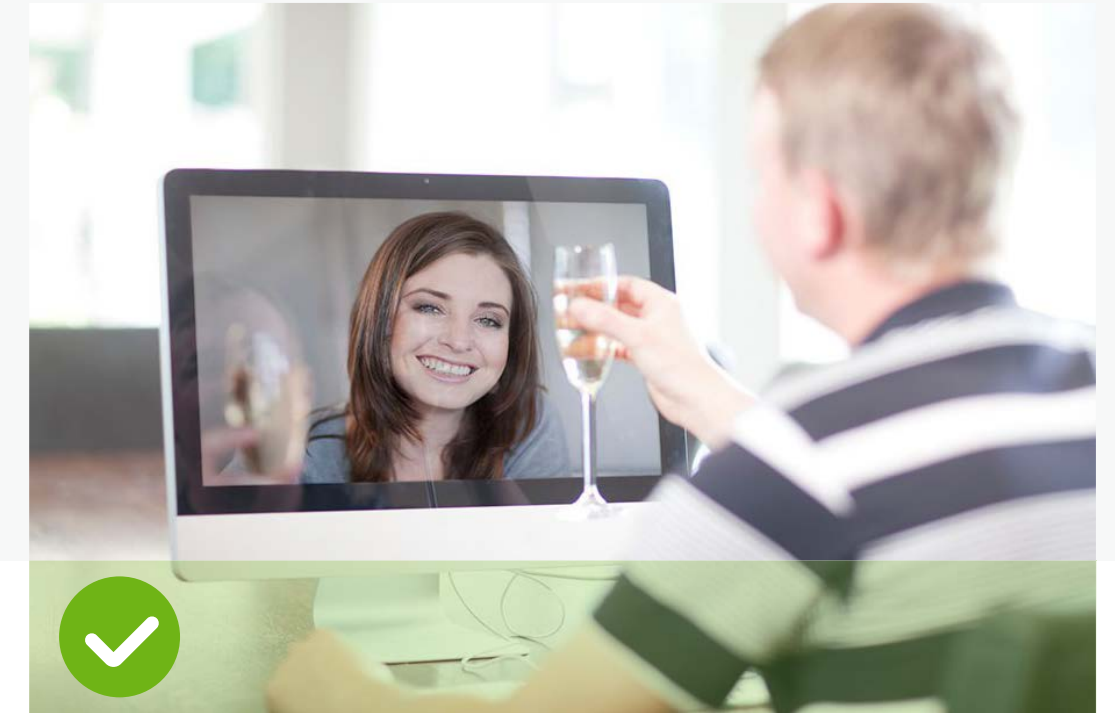
## Wi-Fi Range

- Wall-Penetrating Wi-Fi – Enhanced Wi-Fi signal cuts through walls and obstacles, eliminating dead zones
- Superior Range – High power amplifiers and high-gain antennas provide enhanced wireless range up to 10,000 sq ft\*1.



## Speed

- 450Mbps wireless speed – Ideal for video streaming, online gaming and VoIP



## Reliability

- 3 Modes Functionality – Offers three wireless modes, including Router, Range Extender, and Access Point
- Port Forwarding – Supports virtual server, special application and DMZ host ideal for creating a website within your LAN

# Features



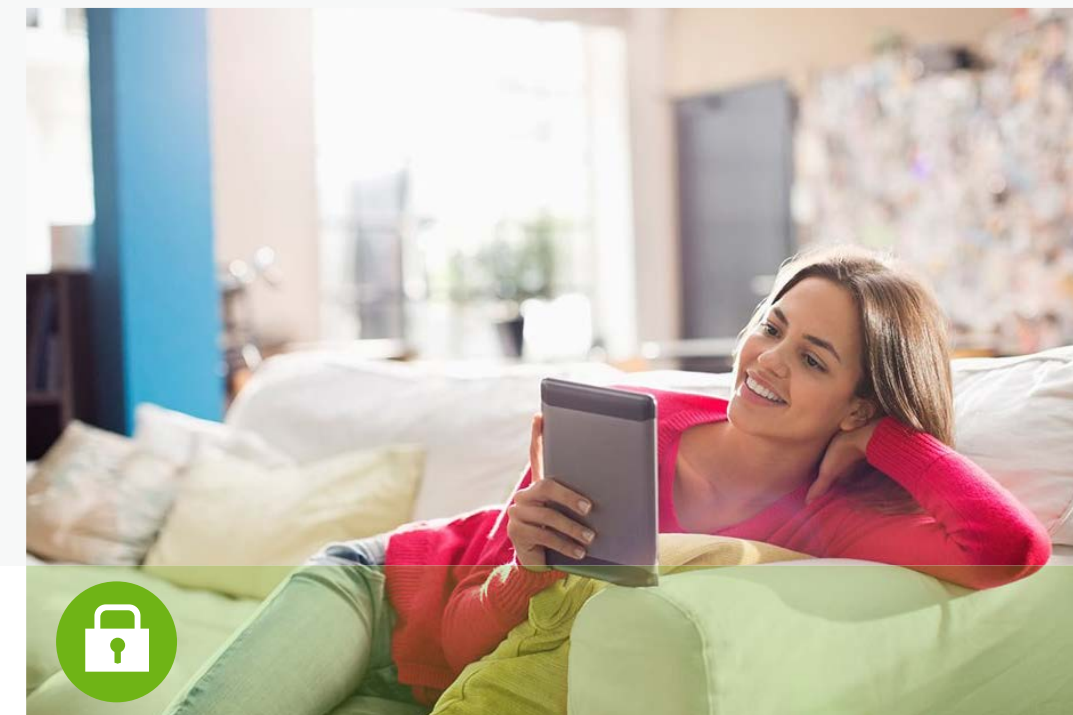
## Efficiency

- Detachable Antennas – External detachable antennas allow for better alignment and stronger antenna upgrades
- Compatibility – Backward compatible with 802.11b/g products



## Ease of Use

- Intuitive Web UI– Ensures simple and quick Installation without hassle.
- Fast Encryption – Easy one-touch WPA wireless security encryption with the WPS button
- Hassle-free Management with Tether App – Easy network management at your fingertips with TP-LINK Tether App on any Android and iOS devices



## Security

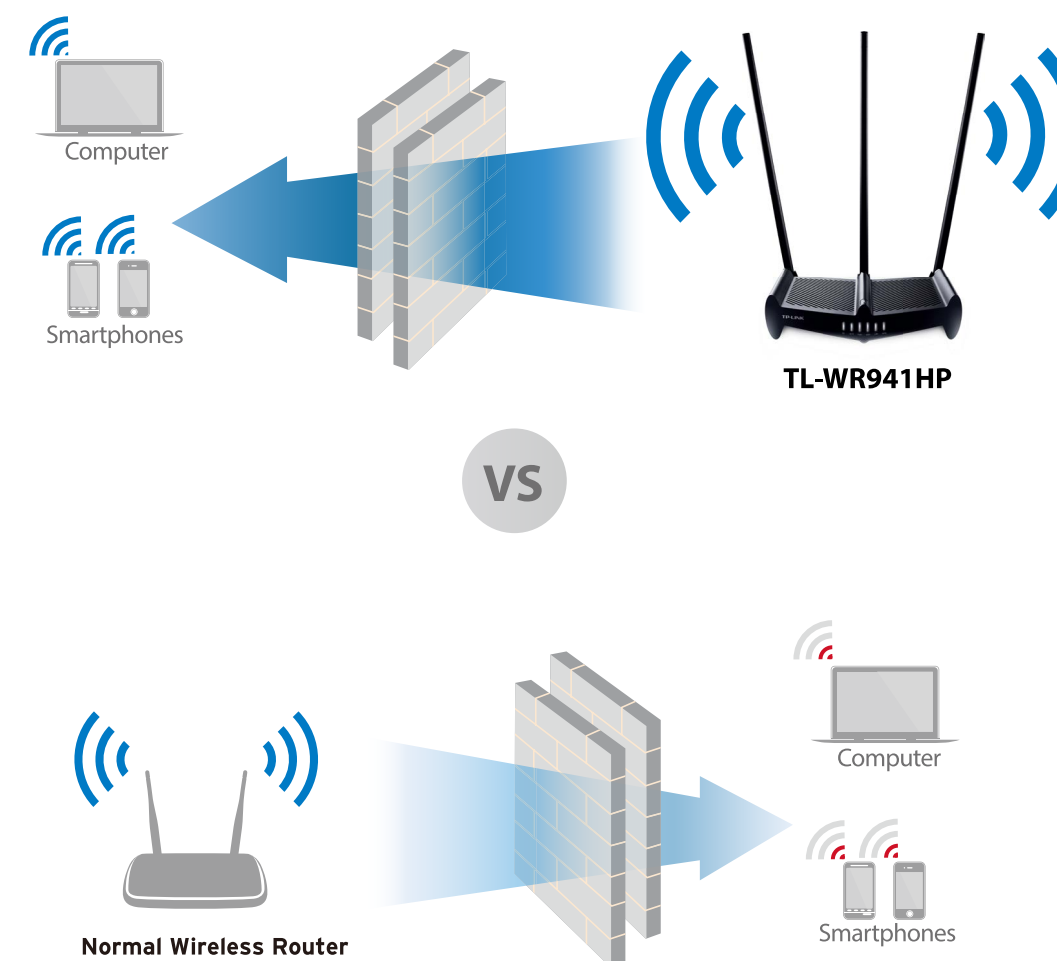
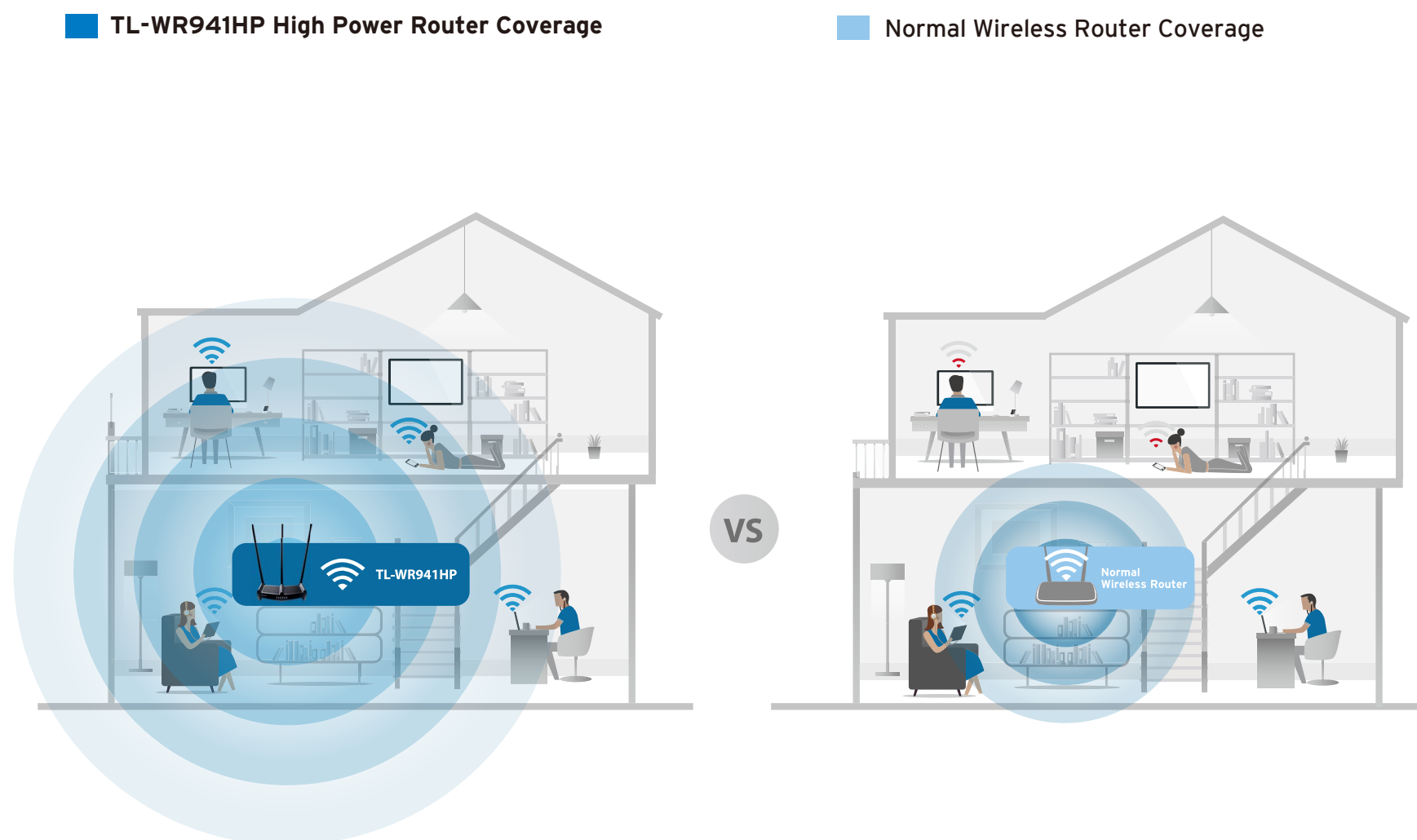
- Access Control – Guest Network Access provides secure Wi-Fi access for guests
- Parental Control – Establish restricted access policies for all connected devices
- Encryptions for Secure Network – WPA-PSK/WPA2-PSK encryptions provide active defense against security threats for user networks

## Superior Wireless Range

High power amplifier and three detachable external 9dBi high gain antennas provide superior wireless range. With the TL-WR941HP, you can enjoy your wireless network not only in restricted indoor areas but also in your backyard or even by the pool.

## Wall Penetrating Wi-Fi

Enhanced Wi-Fi signal provides incredibly strong penetrability, cutting through walls and obstacles, eliminating dead zones, with which, you don't have to be physically tethered to the walls or floors to access the Internet.



# Specifications

## Hardware

- **Ethernet Ports:** 4 10/100Mbps LAN Ports & 1 10/100Mbps WAN Port
- **Button:** WPS Button, Reset Button, Wi-Fi On/Off Button, Power On/Off, RE Button
- **External Power Supply:** 12VDC / 1.5A
- **Dimensions (W x D x H):** 9.0 x 7.5 x 1.9 in. (227.5 x 190 x 48.3mm)
- **Antenna:** 3\*9dBi Detachable Omni Directional Antennas (RP-SMA)



## Wireless

- **Wireless Standards:** IEEE 802.11b/g/n 2.4GHz
- **Frequency:** 2.4-2.4835GHz
- **Signal Rate:** 11n: Up to 450Mbps(dynamic)  
11g: Up to 54Mbps(dynamic)  
11b: Up to 11Mbps(dynamic)
- **Transmit Power\*2:** CE: <20dBm  
FCC: <30dBm
- **Reception Sensitivity:** 450M: -71dBm@10%PER  
150M: -71dBm@10%PER  
54M: -77dBm@10%PER  
11M: -91dBm@8%PER  
6M: -90dBm@10%PER  
1M: -93dBm@8%PER
- **Wireless Function:** Enable/Disable Wireless Radio, WDS Bridge, WMM, Wireless Statistics
- **Wireless Security:** 64/128-bit WEP/WPA/WPA2, WPA-PSK/WPA2-PSK encryptions

# Specifications

---

## Software

---

- **WAN Type:** Dynamic IP/Static IP/PPPoE/PPTP/L2TP/Bigpond
- **DHCP:** Server, Client, DHCP Client List, Address Reservation
- **Quality of Service:** WMM, Bandwidth Control
- **Port Forwarding:** Virtual Server, Port Triggering, UPnP, DMZ
- **Dynamic DNS:** DynDns, Comexe, NO-IP
- **VPN Pass-through:** PPTP, L2TP, IPSec(ESP Head)
- **Access Control:** Parental Control, Local Management Control, Host list, Access Schedule, Rule Management
- **Firewall Security:** DoS, SPI Firewall, IP Address Filter/MAC Address Filter/Domain Filter, IP and MAC Address Binding
- **Management:** Access Control, Local Management, Remote Management

## Others

---

### Package Contents

- 450Mbps High Power Wireless N Router
- RJ45 Ethernet Cable
- Power Adapter
- Quick Installation Guide
- Technical Support Card

### Certification

- CE, FCC, RoHS, NCC, BSMI

### System Requirements

- Microsoft® Windows 10/8.1/8/7, XP, MAC® OS, NetWare®, UNIX® or Linux.

### Environment

- Operating Temperature: 0°C~40°C (32°F ~104°F)
- Storage Temperature: -40°C~70°C (-40°F ~158°F)
- Operating Humidity: 10%~90% non-condensing
- Storage Humidity: 5%~90% non-condensing

# Others

## Ideal to use with



- 300Mbps High Power Wireless USB Adapter  
TL-WN8200ND



- 150Mbps High Power Wireless USB Adapter  
TL-WN7200ND

## Similar Products



- 300Mbps High Power Wireless N Router  
TL-WR841HP



For more information, please visit

<http://www.tp-link.com/en/products/details/?categoryid=&model=TL-WR941HP>

or scan the QR code left

\*1 Range specifications are based on performance test results. Real performance varies in accordance with applications and environmental conditions.

\*2 Output power specifications reflect the maximum possible radio output power, plus antenna gain.

Specifications are subject to change without notice. TP-LINK is a registered trademark of TP-LINK Technologies CO., Ltd. Other brands and product names are trademarks or registered trademarks of their respective holders. No part of the specifications may be reproduced in any form or by any means or used to make any derivative such as translation, transformation, or adaptation without permission from TP-LINK Technologies CO., Ltd.

[www.tp-link.com](http://www.tp-link.com)