

SECURITHOR

SECURITHOR from MCDI Security Products is now at Version 2.0. MCDI makes Monitoring Software since 1994 and the legacy of SAMM, WinSAMM and Securithor 1 is present in this completely new Monitoring Software built on the power of SQL. Alarm processing will never be the same with new features such as WAM-Web Access Module, Weboperator, Operator's alertness check or Multi-site operation. Follow us in this brochure to discover some of the high points of SECURITHOR v2.

With more than 20 years of making Monitoring Software, we concentrated on small details to fine tune the alarm processing section and global experience with new workspace for operators, sharper processing and widgets such as direct search in the traffic list, predefined comments, auto fill and direct one step navigation between menus to speed alarm processing. Add to this a more comprehensive account management and the power of SQL to make enhanced reports and you will experience a new summit in Monitoring Software. Available as Single station version or Network Edition.

Languages

SECURITHOR v2 speaks several languages*! Available in English, French, Greek, German, Portuguese, Romanian, Russian and Spanish. More languages to be added.

SQL power! Strength and Stability

SECURITHOR database is managed by a PostgreSQL 9.3 engine. With this new SQL database and the use of new programming tools, we can now add features in SECURITHOR that we could not dream of before. Now standard in SECURITHOR, you will find resizable windows with position memory for each operator's workspace, training mode for new operators, auto fill and prewritten comments. New features will surely contribute to a faster and more standardized operation in the Central. Other standard features include the Operator's alertness check, a timer for each alarm signal processing as well as a large comprehensive bank of reports.

NO COSTLY SQL LICENSE!

SECURITHOR uses PostgreSQL 9.3. This reliable SQL database has been around for 20 years and is available for free. Contrary to other CMS software, you don't need to add a pricey Microsoft SQL or MySQL that would add to the price of your CMS software.

MADE FOR WINDOWS 7, 8, 8.1 and 10

SECURITHOR is made for Windows 7 and up using the latest programming tools from Microsoft to insure the best compatibility with windows.

Built on the power and strength of SQL



Main standard features

- No logical limitation on number of accounts.
- Alarm code list customizable per account and partition.
- Automatic emailing customizable for each account/partition/alarm code.
- Sends notification to multiple email addresses on signal receipt
- Sends SMS to multiple numbers on signal receipt*
- Automatic logging of alarm when enabled.
- Completely automatic operation possible.
- Up to 64 working schedules per account.
- 512 partitions per account supported
- 10 digits account numbers support
- Automatic daily back up
- Operators alertness check (dead man check).
- Operators processing timer.
- Fast hot keys for fast operation and redundant operations
- Easy operator switch/transfer
- Operation by any authorized station on network.
- Resizable windows, workspace on several monitors
- Favorite window placement memory for each operator.
- Customizable sounds
- Opening/Closing support with grace period.
- Armed/disarmed status at all time
- Incoming signals queued by priority scheme.
- Heartbeat support.
- Flexible test periods: 1...999 hours with delay option.
- Notification of missing auto test reports.
- Visualization of PDF file for each account.
- Import/viewing of 12 JPG images for each accounts.
- Map integration

MINIMUM REQUIREMENTS

- SINGLE STATION** Minimum (Preferred)
- Dedicated dual i3 2.0 GHz and up (Quad core)
 - Memory 4GB (>4GB suggested).
 - Display 1366 x 768 and up (1920x1080, videocard 256MB+).
 - Genuine Windows 7, 8, 10 with admin privileges and .NET 4.5.
 - HDD: 400MB excluding DB 7200rpm (SSD). Actual capacity depends on traffic and DB size)- Internet needed for some functions: emailing, WAM, PPP, STM. Recommended for support. Virtual environments support on agreement only.

SPECIAL BONUS FOR UPGRADE

All SAMM, WinSAMM and SECURITHOR 1 license holders can upgrade to SECURITHOR V2.

Account data conversion is included in the upgrade and performed by MCDI staff. Upgrading comes with full support and special selection among add-on modules.

Check with your local dealer or with MCDI SP sales department mcdi@mcdi.com +514-481-1067

SECURITHOR demo available from:
www.securithor.com

Check the videos on youtube.com/securithor

NETWORK VERSION See securithor.com for comprehensive requirements. Validate proposed operation with MCDI. Present requirements exclude video usage.

SERVER Minimum stated (preferred)
Genuine Windows: 7, 8, 10, 2008r2 or 2012r: Quad core 64 bits, high efficiency CPU such as i7 or Xeon according to usage

- Memory >4GB (8GB+).
- Ethernet port 100/1000 MB
- Hard disk drive: 400MB on 7200rpm (SSD recommended) excluding DB size. Actual disk size will vary according to traffic and number of accounts. Requirements stated for minimal operation and should be adjusted according to experienced traffic. IP receivers application should not reside in Securithor Server. Server should be dedicated, no virtual environments unless agreed with MCDI.

WORKSTATIONS:

Genuine Operating system: windows 7, 8, 10 with admin privileges same as ST1. Communication between server and workstation over IP requires high availability network.

SECURITHOR configuration and levels

SINGLE STATION ST-1:

Model	Accounts	Station(s)	Time limit
Trial	Unlimited	3	1 month
ST1	Unlimited	1	no time limit

NETWORK VERSION

Unlimited accounts. All configurations require SECURITHOR SERVER

STServer SECURITHOR SERVER

STW1-2-3-4 Workstations 1-4 (ea.)

STW5..n Workstations 5+ (ea.)

Add-on Modules

STM	SECURITHOR Mobile Web Viewer
WAM	Web Access Module Service by MCDI
Webop	Weboperator, Web access for staff, installers, salemen
PPP	Panic button Program Packager
APS	Panic button Program for Android phones with geolocation
CAM	Video module, interface with some Hikvision equipments
RSI	Bridge to Frontel fro Videofied
ACC	Bridge to ACC from Avigilon
SIP	Click to dial for SIP/Asterisk Phone PBX - recording option
LBU	Live backup. Replicated server

STM, CAM, PPP included in Network Edition. All modules optional for ST1.

Receivers supported

Integrated IP reception of MCDI DT42, Decrypta 5 and 6. SECURITHOR supports all receivers using either: MCDI IP, MCDI native, MCDI enhanced, Sur-Gard MLR2, MLR2000, System 3, Ademco 685 formats, SK9000, Radionics 6500. *SMS notification using Sony Ericsson GM28/29 GT47/48, Telit 864 family, Siemens/Cinterion mc52i, mc65 or service via Clickatell

Push Notifications: available option for WAM service to Android phones 04 '15

Number of receivers per Station

4 different receivers can connect to ST1. 48 receivers can connect to STserver. Receivers can be spread in network.

Backed by MCDI SP legendary support

Supported during initial installation. Troubleshooting options from 3-12 months. Limited warranty during MCDI SP extended business hours in English, French and Spanish. SECURITHOR is also supported in other languages by a large network of 40 dealers around the world. Emergency support line available after hours in English and Spanish for support contract holders.

KEY FEATURES

SECURITHOR is so packed with features that we encourage you to download a trial version from securithor.com to check them all. Here's a sample of what you will find in SECURITHOR.

Pick an alarm or arrange by priority

All incoming alarms are shown in a general traffic window. You can choose to have the alarm signals presented as they come, pick them manually or force them on operators based upon predefined priority level. Priority codes 1 to 10 are colour coded for easy reading and predefined to insure operators treat most important e.g. fire or burglary over low priority service alarm events.

Multiple events processing

Multiple signals coming for the same event or site can be processed at same time to speed up operation. A succession of zone alarms can be batch processed this way to speed up processing.

Standardized comments

Standardized comments can be defined by management so operators use those when processing alarm or writing notes on events. Professionalism of the Centrals will show as some comments and notes are shown to subscribers. This feature also speeds up processing time as notes by operators are often the same day after day.

Automatic processing of alarm signals

SECURITHOR has the ability to process alarm automatically without operator intervention. Define an action per account for each alarm code. Some alarm codes are only logged automatically while other can trigger emails, SMS sending or Push notification. A high volume Central could operate automatically without operators if critical alarms monitoring is not needed.

Email and SMS sending

SECURITHOR matches incoming signals to the customer account and automatically checks if an email, SMS or Push Notification should be sent for this alarm signal. Operator intervention is not needed as this is totally automatic. Email, SMS and Push Notifications have personalization settings to reflect your Central Station identification and Contact Info.

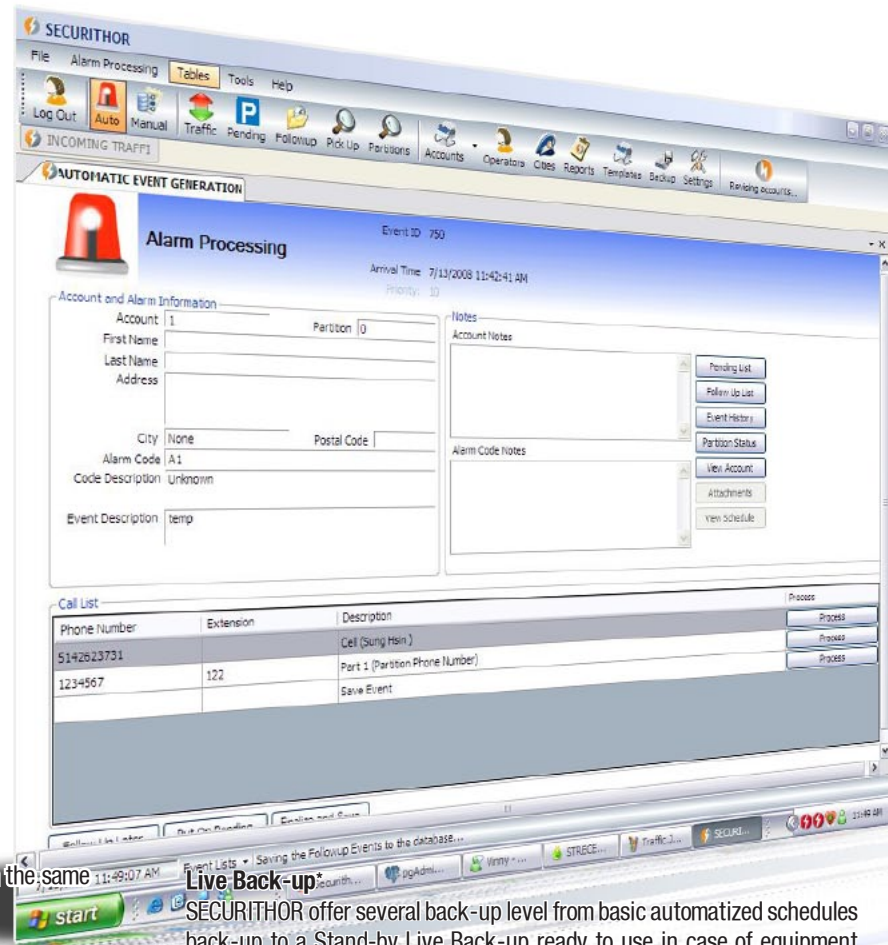
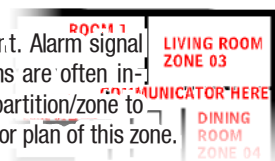
SECURITHOR works with compatible SMS modems or interfaces to your Clickatell account. SECURITHOR will also send SMS through email to SMS gateways.

Push Notification*

Push notifications are sent by SECURITHOR to Android devices as part of an extra package to the WAM service*. Available Q4 2015. iOS available 2016.

View corresponding floor plans

SECURITHOR stores image sets in each account. Alarm signal triggers opening of a specific image. As alarms are often indexed per zone, it's easy to match alarm code, partition/zone to a specific image showing the grounds or the floor plan of this zone.



Live Back-up*

SECURITHOR offer several back-up level from basic automatized schedules back-up to a Stand-by Live Back-up ready to use in case of equipment breakdown. Add-on module Live Back-up will replicate your SECURITHOR database to a secondary stand-by in milliseconds. In case of emergency like HDD failure, you can connect the operator workstations to the stand by server and continue operation.

Click to dial*

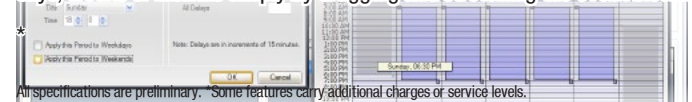
SECURITHOR offers several ways to help the operator dial a phone number. By simply clicking on a phone number, dialling is faster and error free as Securithor takes care of the dialling. ST will connect to a Modem, a Skype phone account. To a Sip or Asterisk PBX with SIP add-on module.

Copy templates

No need to retype all information each time you create an account. Most CMS use only a few sets of alarm codes and generic schedules. Import them into a new account, edit them to your liking and create a new subscribers' account in seconds.

Comprehensive scheduling

SECURITHOR's new scheduling section gives you real flexibility to create and edit schedules. Editing is intuitive, comprehensive and flexible. Copy schedules from template or add daily, weekly or monthly events just by clicking. Select special holiday schedules. Easily extend a schedule on two days, weeks or months simply by dragging and stretching the event block.



VIDEO VERIFICATION

SECURITHOR offers several video features. You can view them in SECURITHOR or add bridges to more advanced softwares from Camera/DVR manufacturers. SECURITHOR gives you a video solution without the expensive hosting equipments and vms

Automatic viewing of video feeds

All incoming alarms can trigger automatic opening of a video stream and/or a stored picture**. It's easy to compare video feed with a reference image.

For most brands, Securithor is able to browse DVR or NVR memory to review videos of alarm events.

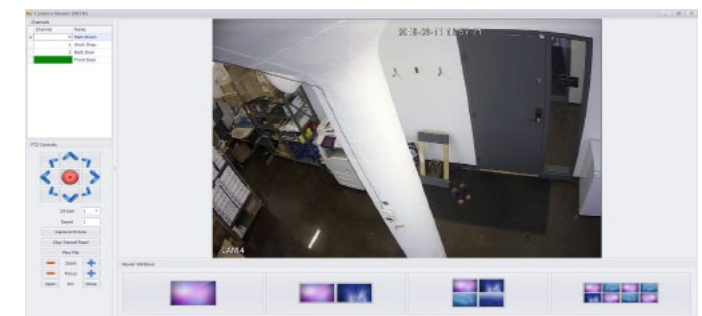


The most advanced bridge to Frontel from Videofied*

High level cooperation between Videofied and MCDI means you can jump from Securithor to Frontel in a click. Frontel acts as an alarm receiver for Videofied cameras/detectors and communicates this information directly to SECURITHOR which can access alarm signal info and stored videos on Frontel in just a click. Alarm code templates for Videofied products are already in SECURITHOR. Videofied offers some of the fastest and most flexible video verification tools.

Native viewer for HIKVISION and DAHUA

The 2 most sold brands of cameras/DVRs are integrated in SECURITHOR. View and command the video feed of Hikvision and Dahua devices directly in SECURITHOR's Video Viewer. Allows control over PTZ, Iris, Focus of several models. Viewer keeps image proportional thus not distorting it.



The SECURITHOR viewer is also compatible with SYSCOM, EPCOM and DLux brands which are the best sellers in México. More brands to be added soon.

Record the video feed and take a snapshot in SECURITHOR
SECURITHOR automatically records the video feed in the SECURITHOR when the SECURITHOR Video Viewer is opened. Operator decides if he keeps the recording or not. Operator can also make a snapshot picture of the video.



Control PTZ cams from the Video Viewer

Staff can go back to stored video simply by clicking icon in the Alarm Event history. By storing videos locally on SECURITHOR PC or in Network, you save money on dvr and web hosting solutions.

Jump to IP address or third party software.

Using another type of IP video feed? SECURITHOR can trigger jump to web browser or to an external application. This can be set to each account/partition/alarm code combination. Totally automatic, no operator intervention required.

High stream or Low stream*

When bandwidth counts, switch from high to low stream by simply clicking on a button.

Advanced bridge to ACC 5.0 from Avigilon*

Coming Q4 2015, this high level interface will allow jumping from SECURITHOR to Avigilon Control Center 5.0. This magnificent VMS allows connectivity to most Onvif equipments on the market and comes in 3 packages. Advanced analytics are available for ACC 5.0 thus making it an ideal partner for SECURITHOR. Incoming alarms from ACC are added to the SECURITHOR workflow. Notifications to subscribers via emails/sms or Push Notifications are handled by SECURITHOR. Get your alarms in SECURITHOR, manage the video viewing in ACC and subscribers accounts in SECURITHOR.



All specifications are preliminary. *Some features carry additional charges or purchase of third part software. Some feature may not apply to all cameras, dvr, nvr brands or be available with all interfaced software.





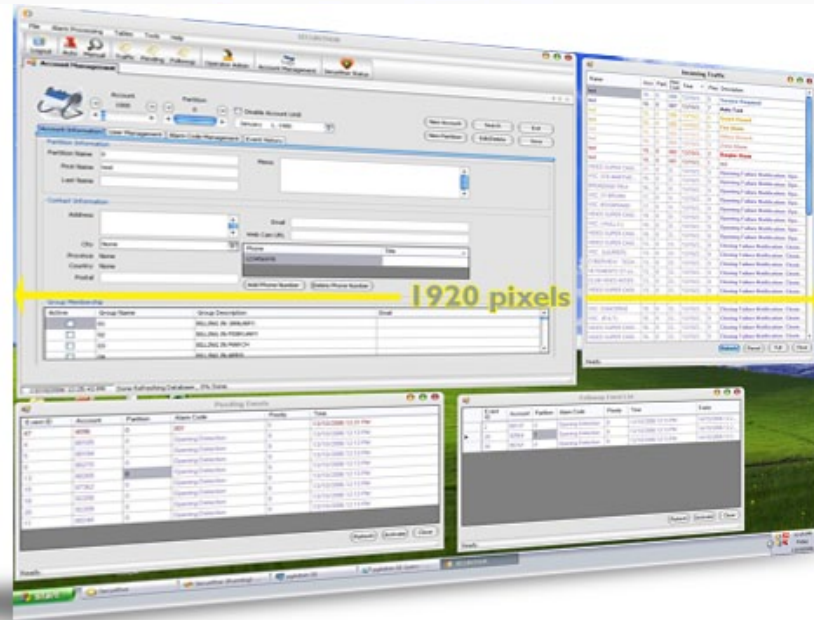
Customize SECURITHOR interface and personalize SECURITHOR's workspace the way you want it

Float, drag, dock, re-size, stretch and place!
Do as you please with SECURITHOR windows. Nearly all windows of SECURITHOR can be sized, resized and placed on your display the way you like it.

Place them on your desktop to best fit your operation mode. Want to keep admin windows on one side and alarm monitoring on the other? Easily done with SECURITHOR.

Operators are not overwhelmed by the quantity of information as it is placed and organized in a personalized way. SECURITHOR supports workspace customization for each operator.

Last positioning of the workspace is remembered for each operator upon log out. When coming back to SECURITHOR, the operator will find his workspace organized the same way he or she left it. No loss of time because the operator can process alarms right away. Operator *log in* is controlled by user and password so settings are individualized.



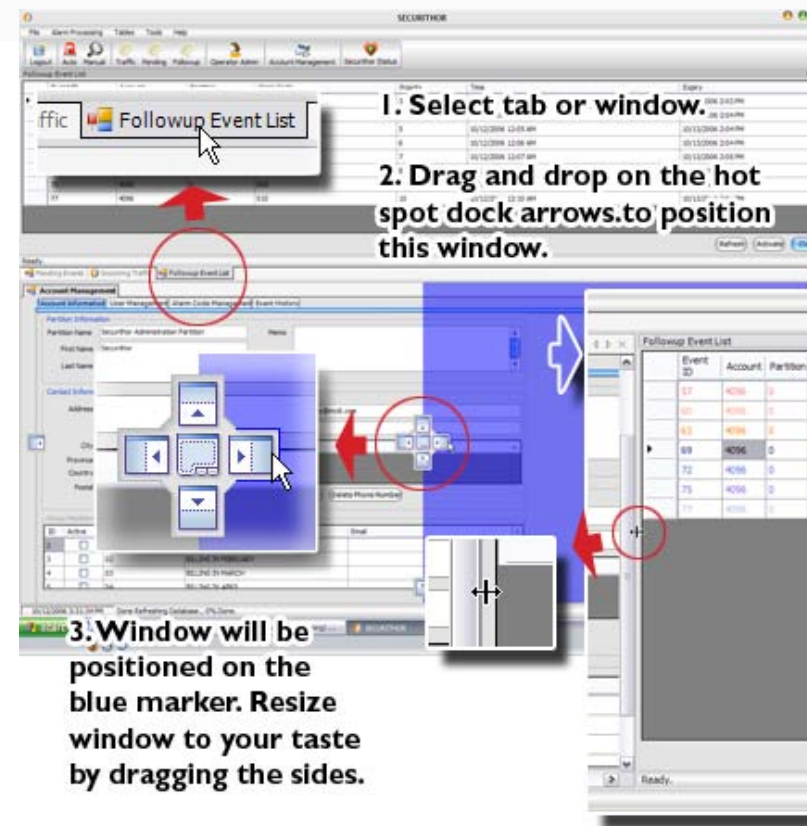
Drag and drop.

Unclutter the workspace by docking SECURITHOR windows. This way your preferred topics are always at the same place, where you want them. Easily group administration windows on one side while alarm processing windows are grouped on the other.



Hide but don't seek

Too much windows in your workspace? Add clarity by docking them and using SECURITHOR sliding window feature. Windows are docked on sides, top or bottom and displayed only when you rollover the tab with your mouse. Window will disappear when you rollover another window. Just Click on the thumb tack to keep frequently viewed windows on permanent display

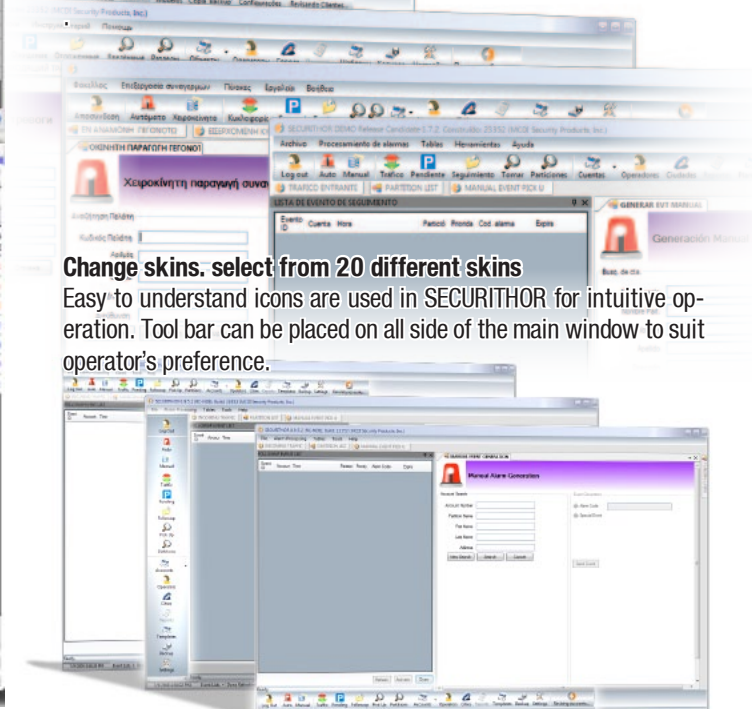


Easily change language.

Operators can select their display language easily from: English, French, German, Greek, Portuguese, Romanian, Russian or Spanish. It's easy to add languages to SECURITHOR. Contact MCDI.

Change skins. select from 20 different skins

Easy to understand icons are used in SECURITHOR for intuitive operation. Tool bar can be placed on all side of the main window to suit operator's preference.



More Features in SECURITHOR

The architecture of the Network Server is based around a central server. This server can range from a typical PC to a high availability server according to the traffic you handle and uptime required. SECURITHOR server can run under regular OS or Server versions. Connected workstations operate under Windows 7, 8, 8.1 or 10.

The server is strictly used for the database hosting/serving and automatic operations such as schedule checks, login check and emailing, sending SMS, replication. Communication with receivers is either on the server, dedicated PC on local network or distributed through workstations.

New SQL engine for SECURITHOR

In designing SECURITHOR, we made sure to use SQL engine and database. SQL respects the 4 S we are looking for: **Strength, Safety, Stability, Speed.**

SECURITHOR is powered by PostgreSQL. This SQL engine has been around for 20 years and it is supported by a large community of developers. But the best part is that it is free to use so you do not have to add a pricey Microsoft SQL or MySQL license to the cost of your Monitoring software. SECURITHOR comes with all necessary SQL tools and installation of the SQL engine is part of SECURITHOR installer.



Compatible with Windows 7, 8, 10, 2008R2, 2012

SECURITHOR will run on normal Windows, no need for a Server OS even if you have the Network Edition. This saves you many hundreds of dollars as you do not need to purchase a pricey server OS.

MCDI uses Microsoft made development tools to insure the utmost compatibility. SECURITHOR takes advantage of the Microsoft .NET framework and all necessary components are part of windows or supplied and installed by SECURITHOR installer.



Advanced Graphical User Interface

SECURITHOR desktop is stretchable even on 5K monitors. Most SECURITHOR menus have a hide and show feature to gain direct access on the desktop without having to go through a maze of menus.

Each operator can customize his own workspace, place menus and forms of SECURITHOR as he wishes by simply dragging and docking on the workspace. Operators can optimize their own SECURITHOR for more efficiency. Settings are remembered for each operator when he logs in.



APS Panic button module for Android

Optional module includes Panic buttons apps for Android and PC. Subscribers install a virtual panic button in their Android phones. Android phones app sends geolocation when available. Operators view the subscriber's location in Google Maps. Follow me feature updates position after activation Provisioning server for easy config without entry errors.



IP input

SECURITHOR is the platform of choice for MCDI new DT42 receivers. All Extrim receivers can report to SECURITHOR over IP. SECURITHOR is supplied with IP interface for **Extrim, D5 and DT42** and is also compatible with NV GPRS Server. Compatible with most IP receiving software.

STM SECURITHOR MOBILE

STM ST mobile viewer allows Supervisors to view over the Web Key Status such as number of events received, emailed/sent by SMS, logged operators, last 100 events and 10 most received events in 24 hours. Works with most web servers or can be hosted free on MCDI's web servers. Made for iPhone, iPad and most web enabled modern devices sporting 320 pixels width. Works with most desktop web browsers supporting WebKit.

STM is standard in STnet and add-on for ST1.

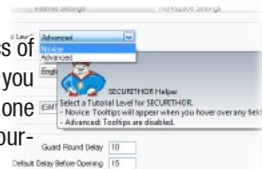
PPP - PC Panic button for PC

With PPP, a Central station can distribute Virtual Panic buttons for PC to all subscribers. Virtual Panic Buttons are supplied with PPP and installed in Subscriber's Windows PC. Subscribers just need to press their secret keyboard combination and a Panic Signal is sent silently over IP to the Alarm Receiving Centre. Many Virtual Panic Buttons can be installed in the same office. PPP makes it easy to configure and distribute Panic button apps, personalized for each subscriber, with IP information to reach the Central already filled error free.

PPP is an add-on module for ST1 and included in ST Network Edition.

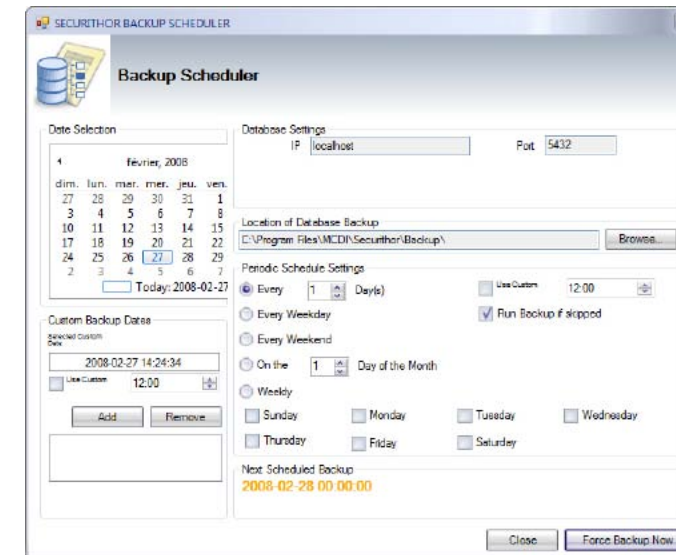
Integrated help and training options

Video tutorials on Youtube show you the basics of SECURITHOR. They are also very helpful when you need to train a new operator. One to one options web training are available when you purchase SECURITHOR.



Automatic periodical back-up

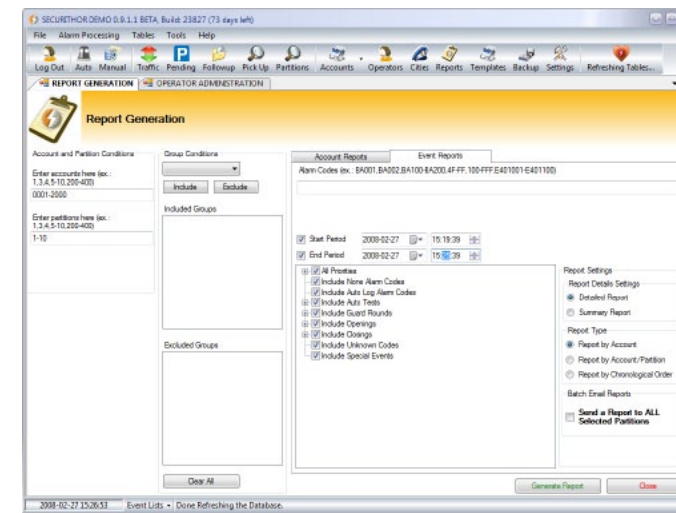
Don't get caught by equipment failure. Schedule back-ups on removable drive or network drive at regular intervals and let SECURITHOR handle back-ups. No need to quit SECURITHOR as back-ups are handled in the background without slowing SECURITHOR.



In case of equipment failure, SECURITHOR also includes a restore application so you can easily rebuild your database from the latest back-up. Back-up on demand is also available at any time. NAS supported.

EXTENSIVE REPORT SECTION

SECURITHOR goes further by using a dedicated Stats and Reports Module for its Report Generation. Numerous filters available to tailor reports and help you manage your CMS. With SECURITHOR you can offer more to your customers as automatic emailing can be scheduled per account.



To help you manage your Central Station operation you can select reports to fine tune open and closing settings and send Reports to customers. Filter by time period, accounts, alarm receiver number, alarm code type etc... Reports can be formatted as rtf, pdf, tab/comma delimited.

The Network Edition

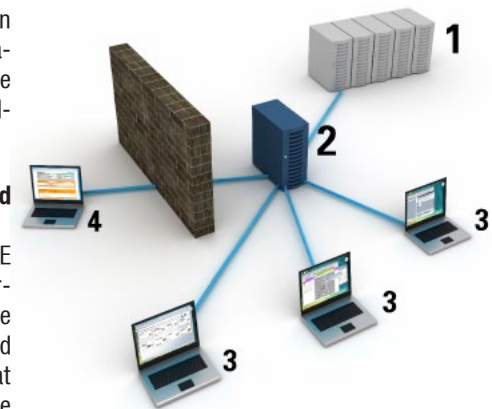
If you require several operators to handle alarm traffic or require a high-redundancy, high-efficiency monitoring setup, Securithor NE (Network Edition) is the choice for you.

To meet the demands of today's Alarm Receiving Centre, Securithor NE was developed with security, scalability and speed in mind. Both small and large ARC aiming for continued growth can benefit from Securithor NE's scalable architecture; from a single server, single station installation to more complex installations with server clusters, gateways and workstations, Securithor NE is designed to meet the demands of any Alarm Receiving Centre.

SECURITHOR is delivered with its own easy-to-follow installer. No IT specialist is needed for a basic setup. Our support staff can offer training and assistance with larger and more complex installations for those who require them.

Architecture: Separate gateway and database server, clusters

To enhance security and speed, the database server [1] and operation gateway [2] can be separated. This ensures the security and stability of the database cluster as the load-balancing between operators [3] and requests from the remote operators [4] take place before touching any of the nodes on the database. Global operation takes place on the gateway, as does data-caching. The database itself is architected to allow data-sharing.



Load-balancing and network throttling

As SECURITHOR NE supports many different access points, we have included tools and measures to ensure that incoming alarms have priority over all other non-essential events. In this way, web requests, data migration, statistics calculations and all other non-essential database interactions are throttled dynamically according to a central's current load.

WAM Web Access Module WAM is hosted on a dedicated web server, physically separated from ST. A permanent connection over VPN tunnel insures WAM receives the most up to date data. Web requests are made directly to WAM and handled solely by WAM thus shielding the Alarm Receiving Centre's SECURITHOR from attacks and traffic surges.

APS Panic button module: this optional module includes Panic buttons apps for Android, iPhones and PC. Subscribers can install a virtual panic button to reach the ARC. Android and iPhone apps sends geolocation when available.

Easy upgrade path from single station to Network SECURITHOR Single Station Edition and Network Edition share a common user interface and a similar database structure. Moving from ST1 to NE is easily done and will not require operator re-training. Securithor NE is architecture allows a rolling upgrade, so the alarm central will incur minimal downtime.

WAM - Web Access Module is a sure way to create new revenues for your Central station. By giving web access to your subscribers, dealers, installers or CMS staff, you can give them more services while reducing calls to your operators.

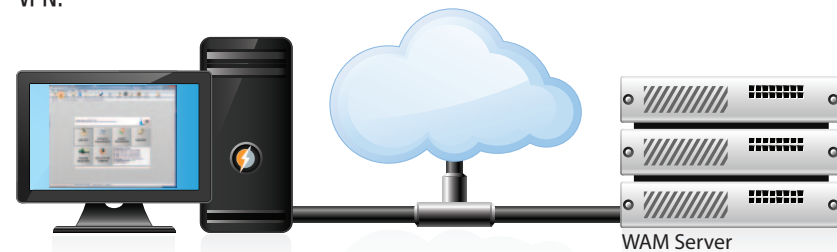
With WAM and a web browser, subscribers, dealers/installers or key CMS staff will access some of SECURITHOR data directly. Your customers can view their alarm events info, view armed/disarmed status, make a simple pdf report, check work orders or even consult their user guide. Dealers, installers or major clients can review account history, armed/disarmed status with the Central. A major client, like a pharmacy chain Security Chief, could review all his accounts with your Central from the web. He could check which store is armed or disarmed and get the opening/closing time for each store without calling the operator or having to wait for an email report.

An installer can check test results of his installation directly on the web without having to interface with an operator. Central staff can view all traffic from the master account. Owners and supervisors do not need to be in the Central to check operation.



SECURE The WAM architecture is such that web requests from your subscribers are never made directly to your SECURITHOR. In fact, no matter if the web traffic is light or heavy, the load on your SECURITHOR is the same because only SECURITHOR pushes information to WAM. SECURITHOR will upload new events, new armed/disarmed status, new work orders or change in accounts. Subscribers are making requests solely to the WAM server, never to your Securithor. Even if your Web Server gets a peak, your SECURITHOR stays impervious to it.

Connection between SECURITHOR and WAM is made through secure VPN.



Push Notifications Send push notifications to your subscribers automatically when receiving alarm signals from their sites. You can decide which account/partition/alarm codes send a notification directly to your subscriber Android device. As it is added to WAM service, MCDI takes care of the hook up with Google and Apple servers. Being on WAM server, it does not affect performance of your local SECURITHOR. Available as an option for WAM v2 service October 2015 for Android devices and 2016 for Apple iOS.



Language Default language according to your region. Available in English, Español, Français, German, Greek, Português, Romanian and Russian. Any language can be added if translation is provided.

2 templates WAM comes with 2 templates, one for web browser and one for smartphones. The phone template is automatically selected using display size. Smartphone template is designed for simple on-the-go viewing, while the desktop template allows for more options and comprehensive display. Subscribers can always switch to the other set.

WAM service MCDI is launching WAM service to take away the burden of web hosting. CMS with less than 10000 accounts can have their WAM hosted on MCDI's server. Hosting support is handled by MCDI so you do not have to worry about expenditure of a web server and getting a hosting infrastructure. MCDI provides this turnkey solution for hosting and WAM license on a MCDI controlled server at ovh.com, one of the biggest professional hosting providers. Initial installation and tuning are handled by MCDI. Graphic personalization is also included same as WAM server. Contact SECURITHOR staff to know more.



Web server WAM is installed in a dedicated web server linked to your SECURITHOR through VPN. No queries are made directly to your SECURITHOR. This insures your SECURITHOR stays shielded from web requests and insures your Alarm Receiving Center (ARC) always gets priority. A sudden surge of web requests or attack on web server will not affect the ARC's SECURITHOR. Permanent connection between ST and WAM insures data is always actual on WAM.

Web pages WAM is supplied with a set of pages for Desktop browsing and another one is supplied for Mobile viewer (Minimum suggested 320px width x 480px height). Web pages are available in many languages. Some of the content is made to be personalized for your ARC. Contact page, New feed, Links to Twitter and Facebook pages are all at your ARC image. Customized look and feel can be contracted through MCDI Graphic designer.

Custom look WAM templates are supplied and allow some customization such as including your own logo, adding your address and branch offices, getting your own web links and pdf documents such as user guides. Completely customized look and feel can be contracted through MCDI Graphic designer.

Extra Remote Back-up WAM is also a complete remote back-up of your SECURITHOR. Your SECURITHOR updates your WAM several times per minutes. In case of catastrophic events such as HDD crash, MCDI can re-install your Securithor from WAM server in no time.

Requirements:
WAM Server Dedicated web server according to expected traffic. Contact MCDI for benchmark results. Permanent internet connection through VPN between SECURITHOR and WAM required to keep data actualized.

If choosing to host WAM yourself or a web hosting provider, MCDI needs to install components Lighttpd, PHP, PostgreSQL (For Linux CentOS or Ubuntu) or PHP, PostgreSQL (For Windows IIS 2008/2012) Contact MCDI to discuss which type of web server is best for your expected web traffic and review our benchmark testing.

WAM service hosting is totally provided by MCDI. Central provides internet connection and security on Central's side.

Linux, PHP and PgSQL: WAM was tested extensively by MCDI using Lighttpd web engine, PHP and PostgreSQL in professional web hosting environments such as OVH.com, iWeb.com and Amazon EC2. This combination provides light and fast web server under CentOS or Ubuntu.

STM included WAM also comes with the STM module. This light viewer is made for the Central station staff. They can view some of Securithor key metrics of Securithor in a smart phone or desktop browser.

What will WAM do for each user?
Subscribers can access event history, view last and next schedule events, know if their system is armed or the status of a service ticket. They can make service requests and contact your ARC or admin center. They can find a contact page and help page with links to your pdf documents. A link to your ARC Facebook and Twitter account can be displayed.

Subscribers access WAM by their web browser or with dedicated Mobile web pages for their iPhone and Android phones. Entry to WAM is protected by account id and password. Default language can be set for the entire site. Language selection is possible from the front page.



Dealers and installers only have access to their own accounts. They have the same access as subscribers plus the ability to get more info for their account groups. They get info such as traffic from the last day or more complete history of specific accounts. They can check which of their accounts are armed or disarmed. They can see the list of service tickets by customer or for all their accounts. They can't process alarms or modify an account but can communicate this information to the ARC from WAM.

ARC staff have the ultimate level of access in WAM. They can do everything the dealers and installers do for every account plus some more. They can view general traffic from the master account as well as armed/disarmed status. They also get STM mobile web viewer to review key data with complete traffic, graphs for the last 24 hours, list of connected operators.

MSP products are also available at the following distributors and retailers:

ARGENTINA, URUGUAY



FIESA S.R.L.

Av. De Los Incas 4154/56
(C1427DNT) Capital Federal
Buenos Aires Argentina
Tel (54 11) 4551-5100
ventas@fiesa.com.ar

BOLIVIA

DSS Digital Security Systems
Calle Joaquín de Velasco #444 Esq.
Puerto Suarez Paralela Calle
Charcas entre 1ero y 2do anillo
Tel: +591 3 335 3800
dss.com.bo

BRASIL

MCDI DO BRASIL

MCDI Comércio de Equipamentos

Eletrônicos Ltda

Fone/Fax: +55(54) 3221-1727
Eng. Teodorico A. Eberle
brasil@mcdi.com.br

CANADA

ALMEX

3853 Trelawny Circle
Mississauga, Ontario
Canada L5N 6S4
PH: 905-785-0855
sales@almexltd.com

MCDI Security Products inc.

English and French: +514-481-1067

Línea directa en español: +514-487-0441

sales@mcdi.com



CHINA

RKL REKELEAD

w. rkl.com.cn
e: market@rkl.com.cn
Shenzen HQ: 0755-86588671-808
Shanghai Branch: 021-56385543
Beijing Office: 010-64514215

COSTA RICA

INTRADE ABC

Sabana Norte, Edif. ICE 200 Norte 100 E.
San José, Costa Rica
TEL: (506)290 4604
edgar@intradeabc.com

ECUADOR, CHILE, COLOMBIA,
NICARAGUA, PANAMA,
EPCOM International Sales Dept.
Oficinas en El Paso, Miami, San Diego, Chi-
huahua
p. +(915) 533 5119 En Español
e. sales@epcom.net
w. epcom.net

GHANA, WEST AFRICA

IM Technologies
Ph: +233576547760, +233543514453
2nd darko lane north kaneshie point 4 Accra.
Acera, Ghana
info@imtechnologiesgh.com
Skype:isaac863

GUATEMALA

COSESA
1era. Avenida 4-23 Zona 9
Guatemala, Guatemala
(502) 2360-0880,
ventas@setelco.com.gt
W. cosesa.com.gt

INDIA

SHIVAMY TRADEXIM Pvt. Ltd.
1- "New Empire" Building,
Indira Chowk, University Road,
Rajkot-360007 (Gujarat-India)
email: - info@shivamytradexim.com
ph: - +91-281-2575796, 2583466,
7575000148.

ITALIA

EL.MO. Spa
Via Pontarola, 70
35011 Reschigliano di Campodarsego (Pd)
Tel. +39 049 920.33.33
info@elmo.it

VOYAGER s.r.l.

via Rivani, 59/b
40138 Bologna
www.voyager-srl.it
f.bassi@voyager-srl.it

Malaysia, Singapore, Indonesia
Vietnam, Cambodia, Philippines
Australia, New Zealand



STRATEL (M) Sdn BHD
12 Jalan Teknologi 3/3A,
Surian Industrial Park,
Kota Damansara PJU5
47810 Petaling Jaya, Malaysia
Tel: + 60 1 3341 5913
sales@stratel.com.my
www.stratel.com.my

MEXICO



En la República Mexicana:
Teléfono: 01 614 415-2525
En Estados Unidos
Teléfono: +1 915 533-5119
Ave. 20 de Noviembre #805
Chihuahua, Chih. C.P.31000 Méx.
Internacionales: (52)+(614)+15-
25-25
www.syscom.com.mx
ventas@syscom.com.mx

NETHERLANDS

van Ovost Automatisering bv
Erveweg 4,
8196 KG Welsum,
the Netherlands,
tel.: +31-570-563691
BTW : NL. 8099.04.214.B01
info@ovost.nl

PORTUGAL, Angola, Moçambique
CIFRASEGURA, Lda.
Rua Maria Helena Vieira da Silva, 16,
Albarraque 2635-462 RIO DE MOURO,
PORTUGAL
TEL: +351219150236
www.cifrasegura.com
c.dias@cifrasegura.com

RUSSIA

Distributor: NAVIgard
6, Cherniahovskiy str. Kaliningrad
236000 Russia
tel +7 (4012) 38-68-66
+7 (4012) 71-68-66
info@navigard.ru
www.navigard.ru

St-Petersburg
Alpro Ltd
194100, 70, Bolshoy Sampsonievskiy
ave., lit. «B»
St.Petersburg, Russia, 197022
Tel./Fax +7 (812) 702-17-52
E-mail: alpro@alpro.ru
www.alpro.ru

Moscow
Contur SB Ltd.
16/4 Dokukina str., 2nd floor, Russia,
Moscow, 125094
Tel. +7 (495) 518-61-81,
http://www.contursb.ru

Moscow
GALFORT
Russia, 119146, Moscow,
Komsomolskiy prospect 23/7, korp.2
Tel: +7 495 933-4883 (multichannel),
galfort@galfort.ru
http://www.galfort.ru

SOUTH and CENTRAL AMERICA
Belize, Cuba, Colombia, Chile, Domini-
cana, Guatemala, Guyana, Honduras,
Nicaragua, Paraguay, Peru, Surinma,
ruguay, Venezuela
MCDI Sud America +514-487-0441
ventas@mcdi.com
See also EPCOM International Sales

Guyane Française, Haiti, Martinique,
Guadeloupe, English speaking
Carribeans:
English and French line: +514-481-1067
mcdi@mcdi.com

U.S.A.
MCDI Security Products Inc.
1001 Lenoir st. A411b
English speaking line: 1-514-481-1067
Spanish speaking line: 1-514-487-0441
mcdi@mcdi.com
www.mcdi.com

AlarmSoft™ / ITech Computer Services
800 Seahawk Circle Suite 134
Virginia Beach, VA 23452
757-226-7226 office
757-321-3733 fax
sales@alarmsoft.com
www.alarmsoft.com

MCDI SP products are also sold directly
in many countries where MCDI SP is not
represented. Contact us at:
sales@mcdi.com
+514-481-1067

BECOMING A MCDI SP DEALER:

We are currently looking for dealers in
several countries. If you think your orga-
nization can benefit from reselling MCDI
SP products, do not hesitate to contact
us with a brief presentation of your com-
pany, your local market and products
you already represent at:
dealership@mcdi.com
+514-481-1067





1001 Lenoir A411b
Montréal QC Canada
English/French: +514-481-1067
En Español: +514-487-0441
W: mcdi.com E: mcdi@mcdi.com