

## Address Count

Address Count refers to the value of addresses that a device uses as viewed by the isolator. The total address count value of devices placed between isolators can be no more than 20. The total number of isolator modules that can be placed on the addressable loop is 40.

Mircom Model#	Description	Address Count
MIX-3000	Ion sensor	1
MIX-3100	Photo sensor	1
MIX-3200	Multisensor	1
MIX-3300	Heat sensor	1
MIX-100P	Priority monitor module	3
MIX-101P	Mini priority monitor module	3
MIX-100R	Relay output module	3
MIX-100S	Sounder control module	6
MIX-2001R	Relay Base	5
MIX-2001H	Sounder base	1



## Alpha Isolator Installation Instructions

### General

The Alpha isolator, part no. MIX-100X, is designed to sense and isolate short-circuits on loops. It is a stand-alone device which is fitted into its own base.

### Installation

The Alpha isolator must be installed in accordance with the applicable NFPA standards, local codes and jurisdictional authorities. Failure to follow these instructions may result in detectors failing to report an alarm condition. Mircom is not responsible for devices which are improperly installed, maintained and tested.

Before installing the isolator check the continuity, polarity and insulation resistance of all wiring. Check that siting is accordance with the fire system drawings and conforms to all applicable local codes such as NFPA 72.

### Mounting

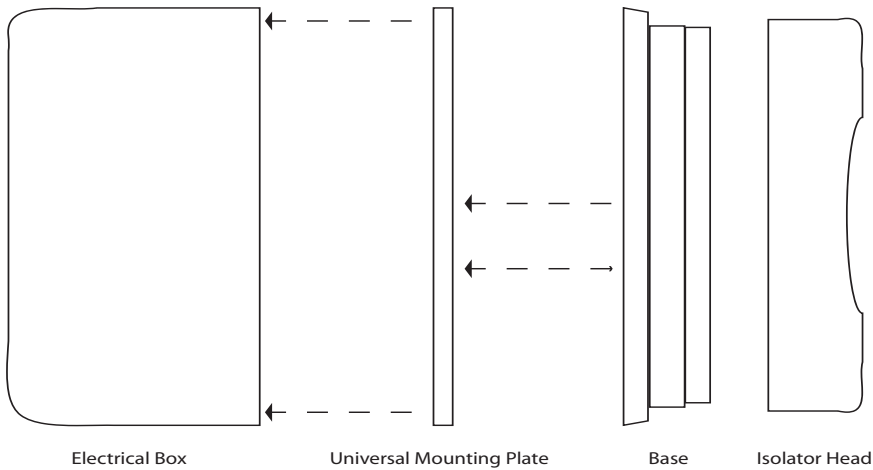
The Alpha isolator is loop-powered and polarity sensitive and can be damaged if connected in reverse polarity.

1. Secure the Universal Mounting Plate to the Electrical Box.
2. Mount base securely to the Universal Mounting Plate.
3. Connect wiring following the diagram overleaf.
4. Ensure earth continuity is maintained using the earth terminal on the base if required.
5. Fit isolator into the base.

Canada  
25 Interchange Way, Vaughan, Ontario, L4K 5W3  
Tel: (905) 660-4655, Fax: (905) 660-4113

USA  
60 Industrial Parkway PMB 278, Cheektowaga, New York 14227  
Tel Toll Free: (888) 660-4655, Fax Toll Free: (888) 660-4113

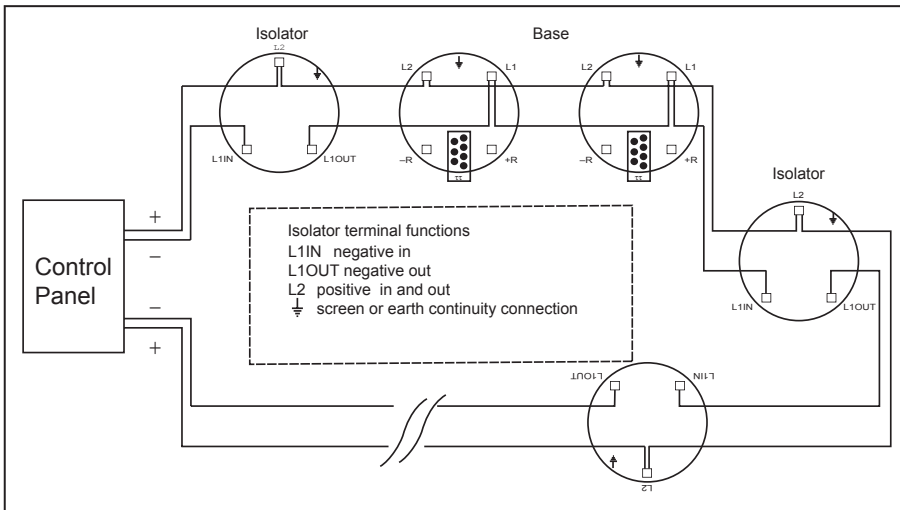
Website: [www.mircom.com](http://www.mircom.com)



**Fig 1** Mounting diagram

**Wiring**

All wiring terminals will accept solid or stranded cables up to 2.5mm<sup>2</sup>.



**Fig 2** Isolating Base wiring diagram

**Commissioning**

It is important that the system be fully tested after installation. In normal operating conditions, apply short-circuits to the supply wiring at various points to confirm the isolators are functioning correctly. Ensure that any applicable local codes are adhered to.

**LED Indicators**

Yellow LED illuminated if a short-circuit is detected either side of the isolator.

**Troubleshooting**

Before investigating individual units for faults, it is very important to check that the system wiring is fault free. Shield continuity faults on a data loop or any ancillary zone wiring may cause communication errors.

Many fault conditions are the result of simple wiring errors.

Fault Finding		
	Problem	Possible Cause
LED illuminated constantly	LED illuminated constantly	Short-circuit on loop wiring. Wiring reverse polarity. Too many devices between isolators.
Failure to isolate a short-circuit	Failure to isolate a short-circuit	Incompatible control panel. Incorrect wiring.

**Technical Data**

Environment	indoor, non-icing, non-condensing
Operating temperature	0°F (-20°C) to 155°F (54°C) 32°F (0°C) to 100°F (38°C) (UL approved continuous operating range)
Humidity	0 to 95%RH
Material	white polycarbonate V-0 to UL94

**Electrical**

Supply voltage	17-28V dc plus protocol voltage pulses
Current consumption	35µA at 24V
Maximum line current	1A

**Compatibility Information**

The isolator has been approved by Underwriters Laboratories Inc. For details of compatible control panels, please contact Mircom.