

<b>System</b> <ul style="list-style-type: none"> <li>CPU: TI DM365 SoC</li> <li>Flash: 128MB</li> <li>RAM: 256MB</li> <li>Embedded OS: Linux 2.6</li> </ul>	<b>Networking</b> <ul style="list-style-type: none"> <li>10/100 Mbps Ethernet, RJ-45</li> <li>Onvif support</li> <li>Protocols: IPv4, IPv6, TCP/IP, HTTP, HTTPS, UPnP, RTSP/RTP/RTCP, IGMP, SMTP, FTP, DHCP, NTP, DNS, DDNS, PPPoE, CoS, QoS, SNMP and 802.1x</li> </ul>
<b>Lens</b> <ul style="list-style-type: none"> <li>IP8151: CS-mount, vari-focal, f = 3.1~8 mm, F1.2, auto iris</li> <li>IP8151P: CS-mount, vari-focal, f = 3.1~8 mm, F1.2, P-iris</li> <li>Removable IR-cut filter for day &amp; night function</li> </ul>	<b>Alarm and Event Management</b> <ul style="list-style-type: none"> <li>Triple-window video motion detection</li> <li>Tamper detection</li> <li>One D/I and one D/O for external sensor and alarm</li> <li>Event notification using HTTP, SMTP or FTP</li> <li>Local recording of MP4 file</li> </ul>
<b>Angle of View</b> <ul style="list-style-type: none"> <li>35.2° ~ 90.7° (horizontal)</li> </ul>	<b>On-board Storage</b> <ul style="list-style-type: none"> <li>SD/SDHC card slot</li> <li>Stores snapshots and video clips</li> </ul>
<b>Shutter Time</b> <ul style="list-style-type: none"> <li>1/5 sec. to 1/40,000 sec.</li> </ul>	<b>Security</b> <ul style="list-style-type: none"> <li>Multi-level user access with password protection</li> <li>IP address filtering</li> <li>HTTPS encrypted data transmission</li> <li>802.1X port-based authentication for network protection</li> </ul>
<b>Image Sensor</b> <ul style="list-style-type: none"> <li>1/3" CMOS sensor in 1280x1024 resolution</li> </ul>	<b>Users</b> <ul style="list-style-type: none"> <li>Live viewing for up to 10 clients</li> </ul>
<b>Minimum Illumination</b> <ul style="list-style-type: none"> <li>0.04 Lux / F1.2 (Color)</li> <li>0.001 Lux / F1.2 (B/W)</li> </ul>	<b>Dimension</b> <ul style="list-style-type: none"> <li>154 mm (D) x 72 mm (W) x 62 mm (H)</li> </ul>
<b>Video</b> <ul style="list-style-type: none"> <li>Compression: H.264, MJPEG &amp; MPEG-4</li> <li>Streaming: <ul style="list-style-type: none"> <li>Multiple simultaneous streams</li> <li>H.264 streaming over UDP, TCP, HTTP or HTTPS</li> <li>MPEG-4 streaming over UDP, TCP, HTTP or HTTPS</li> <li>MJPEG streaming over HTTP or HTTPS</li> </ul> </li> <li>Supports activity adaptive streaming for dynamic frame rate control</li> <li>Supports ePTZ for data efficiency</li> <li>Supports 3GPP mobile surveillance</li> <li>Frame rates: <ul style="list-style-type: none"> <li>H.264: Up to 30 fps at 1280x1024</li> <li>MPEG-4: Up to 30 fps at 1280x1024</li> <li>MJPEG: Up to 30 fps at 1280x1024</li> </ul> </li> <li>Interface: <ul style="list-style-type: none"> <li>BNC connector for video output</li> <li>NTSC/PAL video output switch</li> <li>Focus assist button (IP8151P only)</li> </ul> </li> </ul>	<b>Weight</b> <ul style="list-style-type: none"> <li>Net: 664 g (Without lens)</li> </ul>
<b>Image Settings</b> <ul style="list-style-type: none"> <li>Adjustable image size, quality and bit rate</li> <li>Time stamp and text caption overlay</li> <li>Flip &amp; mirror</li> <li>Configurable brightness, contrast, saturation, sharpness, white balance and exposure</li> <li>AGC, AWB, AES</li> <li>WDR enhanced (IP8151P only)</li> <li>Automatic, manual or scheduled day/night mode</li> <li>BLC (Backlight Compensation)</li> <li>Supports privacy masks</li> </ul>	<b>LED Indicator</b> <ul style="list-style-type: none"> <li>System power and status indicator</li> <li>System activity and network link indicator</li> </ul>
<b>Audio</b> <ul style="list-style-type: none"> <li>Compression: <ul style="list-style-type: none"> <li>GSM-AMR speech encoding, bit rate: 4.75 kbps to 12.2 kbps</li> <li>MPEG-4 AAC audio encoding, bit rate: 16 kbps to 128 kbps</li> <li>G.711 audio encoding, bit rate: 64 kbps, <math>\mu</math>-Law or A-Law mode selectable</li> </ul> </li> <li>Interface: <ul style="list-style-type: none"> <li>Built-in microphone</li> <li>External microphone input</li> <li>Audio output</li> <li>External/Internal microphone switch</li> </ul> </li> <li>Supports two-way audio</li> <li>Supports audio mute</li> </ul>	<b>Power</b> <ul style="list-style-type: none"> <li>12V DC</li> <li>24V AC</li> <li>Power consumption: Max. 3.6 W</li> <li>802.3af compliant Power-over-Ethernet (Class 2)</li> </ul>
	<b>Approvals</b> <ul style="list-style-type: none"> <li>CE, LVD, FCC, VCCI, C-Tick</li> </ul>
	<b>Operating Environments</b> <ul style="list-style-type: none"> <li>Temperature: -10 ~ 50 °C ( 14 ~ 122 °F)</li> <li>Humidity: 90% RH</li> </ul>
	<b>Viewing System Requirements</b> <ul style="list-style-type: none"> <li>OS: Microsoft Windows 7/Vista/XP/2000</li> <li>Browser: Mozilla Firefox, Internet Explorer 6.x or above</li> <li>Cell phone: 3GPP player</li> <li>Real Player: 10.5 or above</li> <li>Quick Time: 6.5 or above</li> </ul>
	<b>Installation, Management, and Maintenance</b> <ul style="list-style-type: none"> <li>RS-485 interface for scanners, pan/tilts</li> <li>Installation Wizard 2</li> <li>32-CH ST7501 recording software</li> <li>Supports firmware upgrade</li> </ul>
	<b>Applications</b> <ul style="list-style-type: none"> <li>SDK available for application development and system integration</li> </ul>
	<b>Warranty</b> <ul style="list-style-type: none"> <li>36 months</li> </ul>

All specifications are subject to change without notice. Copyright©2011 VIVOTEK INC. All rights reserved.

**SUPREME**  
A NEW DEFINITION OF HD



# Fixed Network Camera IP8151/51P

Supreme Night Visibility • Full Frame Rate • 1.3MP



VIVOTEK IP8151/51P represents the next-generation in video quality in network cameras. As one of the VIVOTEK's SUPREME Series products, users will be able to experience the utmost in picture clarity through utilization of SONY's latest sensor technology, dubbed "Exmor", which enables the camera to capture exceptional details during daytime, as well as offer unparalleled visibility under low-light conditions through its Supreme Night Visibility feature.

The IP8151P is integrated with more value-added functions to give user more flexibility. First is the WDR enhancement that allows users to identify image details in extremely bright as well as dark environments. The advanced P-iris lens, which controls the iris with extreme precision with its built-in stepping motor. By using software controls, the lens maintains the iris opening at an optimal level at all times, resulting in superior sharpness and depth of field as well as image quality. In addition, the IP8151P is also equipped with a focus assist button to allow users to precisely adjust the camera focus. After pushing the focus assist button on the camera unit, an indicator will be displayed onscreen with detailed focus information, which will change in accordance with the manual adjustment. Moreover, continuing to push the button will zoom in on the target area for fine tuning, resulting in better usability and picture clarity.

Also featuring a myriad of other high-end features such as SD/SDHC card slot, PoE, multiple streams, and more, the IP8151/51P camera is the ideal choice for the most demanding monitoring applications. By providing sharp, smooth video, plus exceptional performance in low-light conditions, the IP8151/51P can secure a variety of sites such as retail stores, school campuses, and much more.

\*Exmor is a trademark of Sony.



VIVOTEK INC.  
6F, No.192, Lien-Cheng Rd., Chung-Ho, Taipei County, Taiwan  
T: +886-2-82455282 | F: +886-2-82455332 | E: sales@vivotek.com

VIVOTEK USA, INC.  
470 Lakeside Drive Suite C, Sunnyvale, CA 94085 USA  
T: 408-773-8686 | F: 408-773-8298 | E: salesusa@vivotek.com



## Supreme Night Visibility

SONY's Exmor™, the most well known back-illuminated CMOS technology, has been used in consumer electronics such as digital cameras and digital camcorders and has proven to be a great success in capturing video in low light conditions. Thus, VIVOTEK IP8151/51P, which features this sensor specifically designed for the security market, can surpass the performance of traditional cameras in low light environments. Traditionally, megapixel cameras require more light to achieve the picture clarity for object identification. With 1.3 megapixel being the most popular megapixel camera standard today, VIVOTEK has explored how to achieve better image quality and usability through integration of the latest technologies.

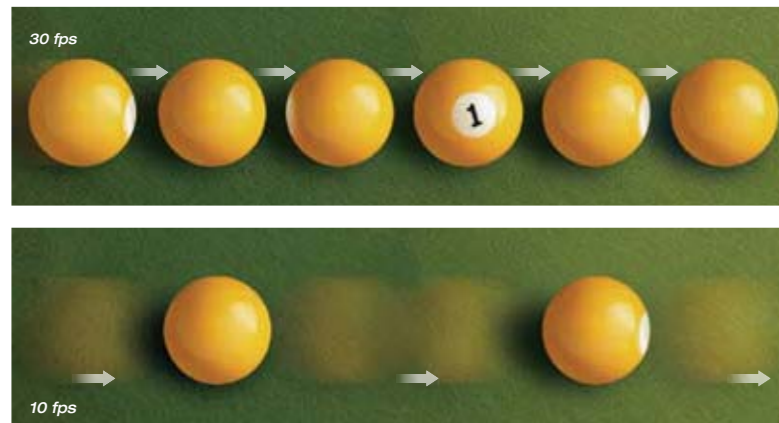
**SUPREME**  
A NEW DEFINITION OF HD



\*Exmor is a trademark of Sony.

## Full Frame Rate at 1.3 Megapixel

The frame rate of traditional megapixel cameras are limited to only 10~15 fps due to hardware limitations. However, the IP8151/51P, equipped with Texas Instruments' newest chipset "DaVinci™", is able to transmit 1.3 Megapixel resolution video at 30fps compressed with H.264. The ability to view and record at a full frame rate brings many potential benefits. For example, if an object or person passes through the camera view at high speed, a 10fps camera might only capture 1 frame including the target, making identification difficult if that frame does not contain adequate information. However, under the same circumstances, an IP8151/51P can capture 3 frames of the target, including details at multiple instances when the event occurs.



\*DaVinci is a trademark of Texas Instruments.

## Enhanced Clarity

### The benefits of P-iris Lens (IP8151P only):

- Configurable iris
- Applicable depth of field
- Optimal image quality



## Applications

### Parking Lot

With supreme night visibility, IP8151/51P is the perfect choice for indoor/outdoor parking lots. The colors of the cars and passengers are clearly seen and recorded without external illumination. IP8151/51P can perfectly protect both human and cars at both day and night.

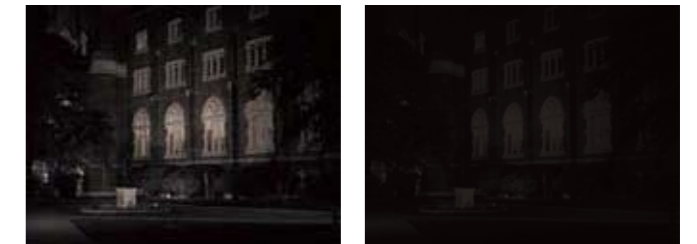


IP8151/51P

Conventional

### Campus

With high sensitivity & day/night function, IP8151/51P is also capable of campus monitoring. When there are true black areas, IR illuminators can be installed to avoid "black spots" of security. The high sensitivity further increases the range of IR, making IP8151/51P the perfect choice of campus monitoring.



With IR Light

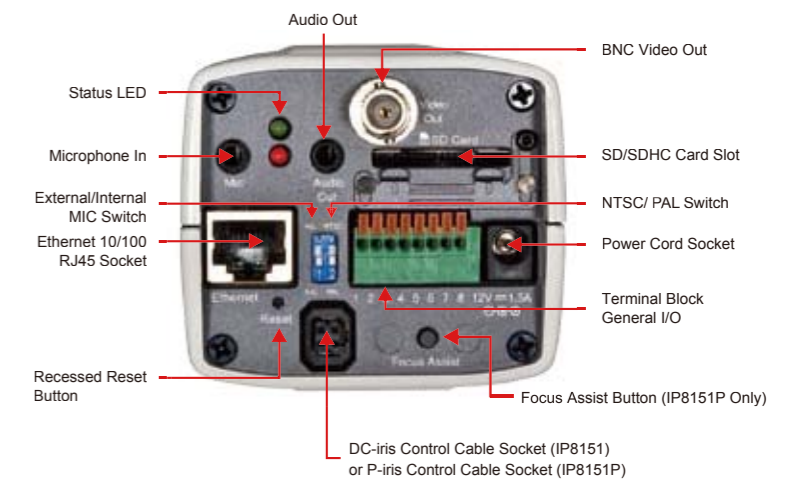
Without IR Light

### Traffic Surveillance

In traffic monitoring, the most important thing is to see the details of fast-moving cars. IP8151/51P is capable of capturing fast-moving vehicles by the ability to record 30fps at 1.3-megapixel resolution. With supreme night visibility, IP8151/51P can still capture moving vehicles under low-light circumstances.



## Physical Description



## Product Features

### IP8151/51P Fixed Network Camera

Supreme Night Visibility • Full Frame Rate • 1.3MP • P-iris

- 1.3-megapixel CMOS Sensor
- Supreme Night Visibility
- Up to 30 fps @ 1280x1024 (1.3MP)
- 3.1 ~ 8 mm Vari-focal, Auto-iris Lens (IP8151)
- 3.1 ~ 8 mm Vari-focal, P-iris Lens (IP8151P)
- Removable IR-cut Filter for Day and Night Function
- Built-in Focus Assist Button for Precise Focus Adjustment (IP8151P only)
- Supports WDR Enhancement for Unparalleled Visibility in Extremely Bright and Dark Environments (IP8151P only)
- Real-time H.264, MPEG-4 and MJPEG Compression (Triple Codec)
- Multiple Simultaneous Streams
- Built-in SD/SDHC Card Slot for On-board Storage
- Built-in 802.3af Compliant PoE
- CS- or C-mount Adjustment Ring for Flexible Lens Installation



▲ P-iris Lens (IP8151P)

